

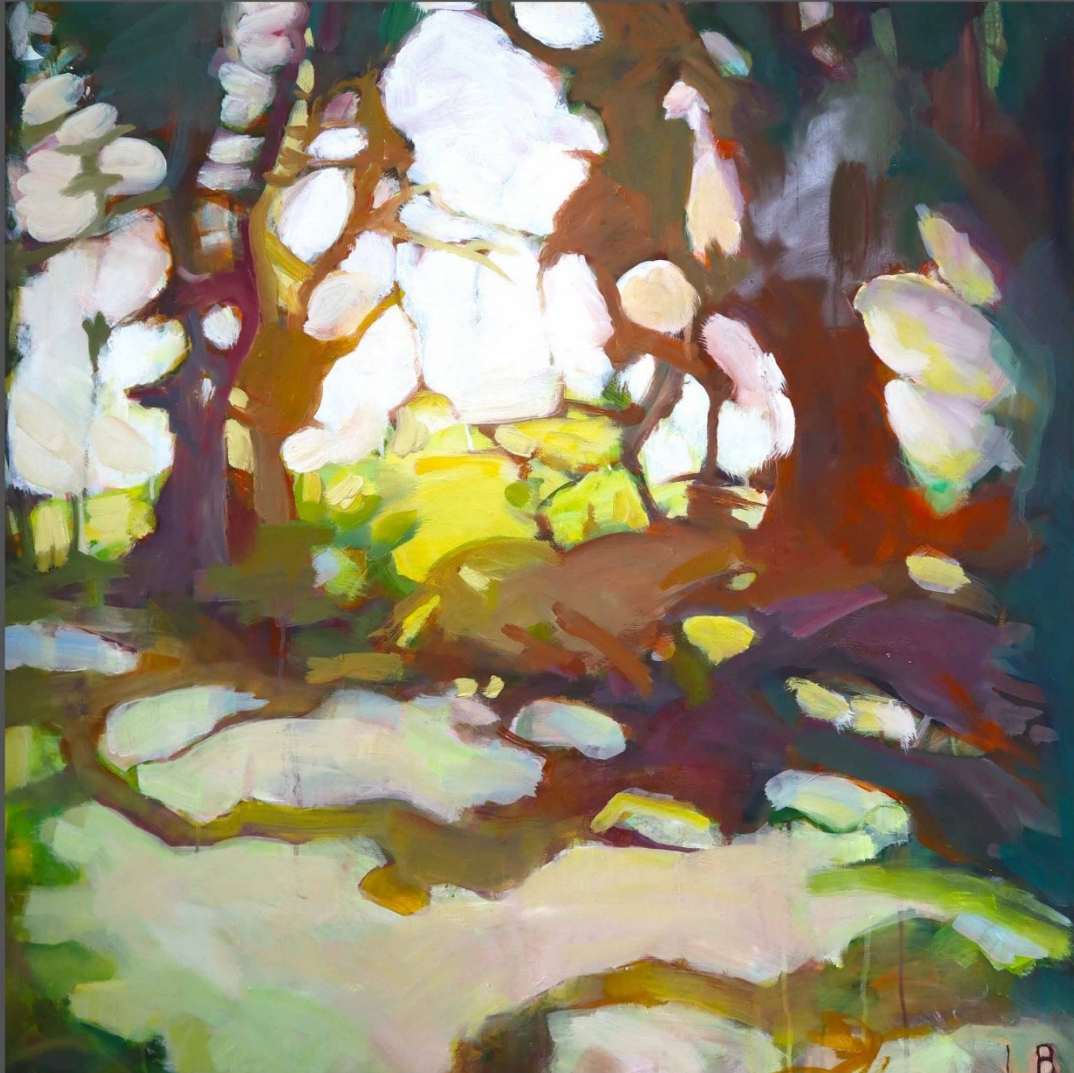
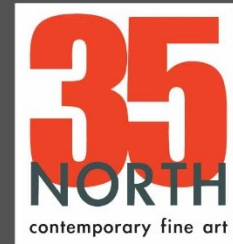
BEYOND FOCUS
Exhibition 4th to 20th June 2026



35 North Contemporary Fine Art
35 North Road Brighton BN1 1YB

BEYOND FOCUS

Paintings by Lucy Bristow



Exhibition runs 4th to 20th June 2026
open Thursday to Saturday 11-5.30

For enquiries contact Sharon Whiting. sw@sharonwhiting.com 07792 058039
www.35northgallery.com. 35 North Road, Brighton, BN1 1YB

BEYOND FOCUS

Paintings by Lucy Bristow



Lucy is an artist living in Brighton, UK. Having studied Fine Art at Bristol in the late 1980s, she has exhibited in group and solo shows since this time. She is an active Artcan member, a member of the Sussex Watercolour Society and the Society of Sussex painters, regularly exhibiting with these groups throughout Sussex. She enjoys taking part in group exhibitions with the Brighton Artist Open Houses during May, most recently exhibiting and co-curating “No Hard Shoulder” group exhibition at the beautiful Regency Town House for the last 2 years. Lucy works from a studio at Brighton Art Space 2 in Trafalgar St. She submits work to various Open Calls each year. Notably this year she took part in the filming as a selected ‘pod’ artist of the Sky Arts Landscape Artist of the Year 2026 TV programme. She was shortlisted for the Wales Contemporary Prize 2025, and as a finalist for the Jackson’s Art prize 2024.

BEYOND FOCUS

My recent series of paintings explore peripheral vision as a way of seeing that which exists outside of focus and certainty. Rather than directing the viewer toward a single subject, I am interested in what happens at the edges—where forms blur, dissolve, or assert themselves without demanding attention. This marginal space is where perception becomes intuitive, emotional, and incomplete.

Working from the logic of peripheral sight, I allow ambiguity to guide the composition. Shapes, colours, and gestures emerge without clear boundaries, mirroring how my eye absorbs information indirectly. Light seems to demand for attention, with everything else more a confusion of shapes and awareness.

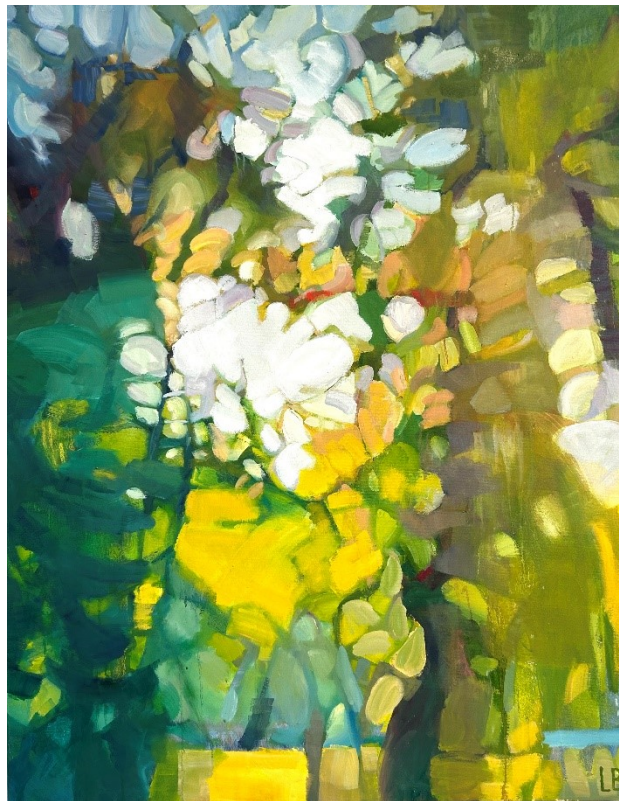
Images in peripheral vision can also reflect the overlooked, the subconscious, and the moments that register without being fully processed. By emphasising what is not centered or resolved, my paintings resist clarity and invite a slower, more embodied form of looking. The work asks viewers to trust what they sense rather than what they can immediately name, and to remain open to what exists just beyond focus.

Lucy Bristow 2026



Golden Promises

Acrylic & cold wax on canvas, 124x124cm £1800



Pieces Of Me

Oil on canvas, 122x96cm £1800



Your Edges Crumble

Acrylic & cold wax on canvas, 96x96cm

£1600



I Wonder What It's Like Seeing Through Your Eyes

Acrylic & cold wax on canvas, 96x96cm

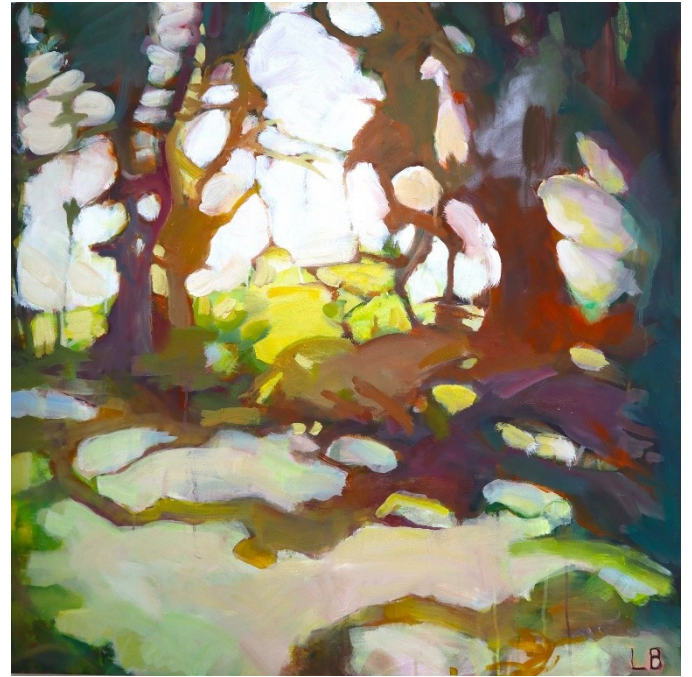
£1600



The Corner Of My Eye

Oil on cradled wood, 79x79cm

£900



The Spaces Between

Oil on cradled wood, 79x79cm

£900



Edges Soften

Oil on cradled wood, 79x79cm

£900



Hiding in Plain Sight

Oil on cradled wood, 79x79cm

£900



Study for "Rivers of Shadow"

Acrylic on board, 20x20cm

£200



Study for "The Space Between"

Acrylic on board, 20x20cm

£200



Study for "Under The Tree Where I Used To Sit"

Acrylic on board, 20x20cm

£200



Study for "I wonder What It's Like Seeing Through Your Eyes"

Acrylic on board, 20x20cm

£200



Study for "The Corner Of My Eye"

Acrylic on board, 20x20cm £200



Study for "Bruises"

Acrylic on board, 20x20cm £200



Study for "Edges Soften"

Acrylic on board, 20x20cm £200