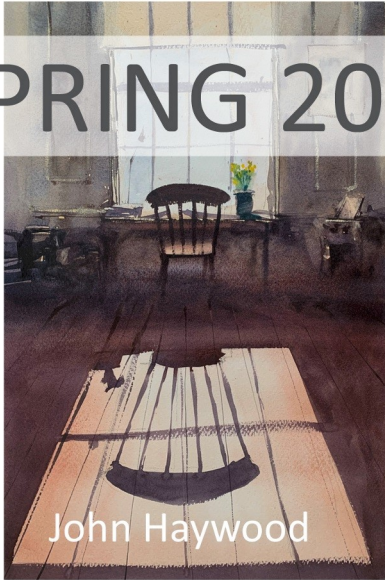


EXHIBITION CATALOGUE

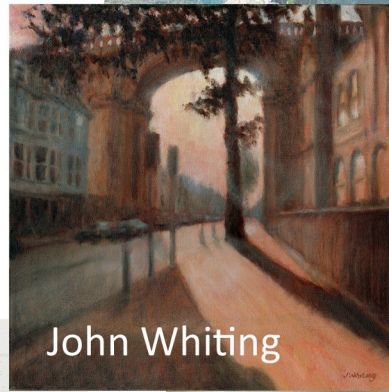
SPRING 2024



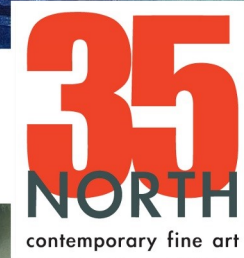
John Haywood



Emily Jolley



John Whiting



Tania Rutland



Lily Rigby

Exhibition 15th March to 27th April 2024
open Thursday to Saturday 11-5.30

For enquiries contact Sharon Whiting. sw@sharonwhiting.com 07792 058039
www.35northgallery.com. 35 North Road, Brighton, BN1 1YB

CONTENTS

- John Haywood—Watercolours
- Lily Rigby—Oil painting
- Emily Jolley—Acrylic painting
- Tania Rutland—Etchings
- John Whiting—Painting

JOHN HAYWOOD



A passionate watercolour painter of landscapes, cityscapes, and interiors, particularly inspired by the contre-jour approach of looking into the light. Seeking to capture and evoke a distinctive sense of mood, drama, and atmosphere. Exhibiting at 35 North for the first time.

Sussex Watercolour Society member selected for the following exhibitions and awards.
 The Royal Institute for Painters in Watercolour exhibition at The Mall Galleries.
 The British Art Prize (one of only 50 paintings selected in all media)
 The Artist and Leisure Painter Open Exhibition Patchings Arts Centre.
 The Fabriano Acquarello Convention in Bologna, 2022 and 2024.
 Merit Award Winner in the International Watercolour Masters in 2022 and 2024.



Sunlit interior

Watercolour 73x53cm framed £ 585



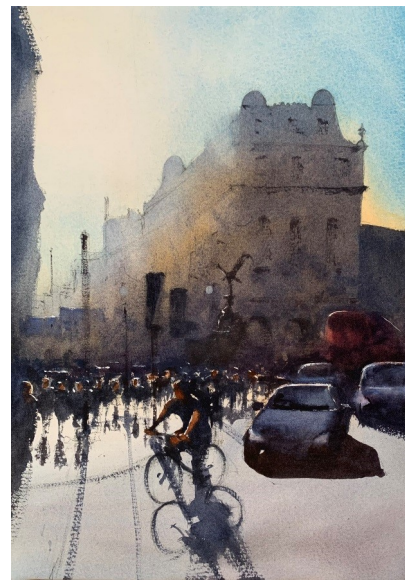
Country lane near Rodmell

Watercolour 73x53cm framed £ 600



Waterlogged

Watercolour 53x43cm framed £ 450



Piccadilly Circus

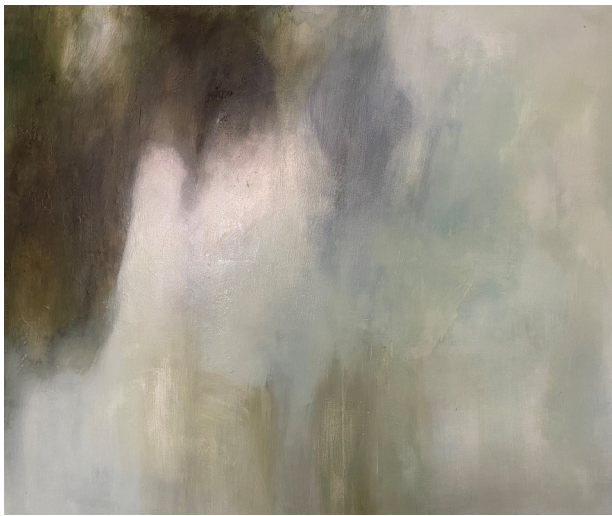
Watercolour 53x43cm framed £ 450

LILY RIGBY

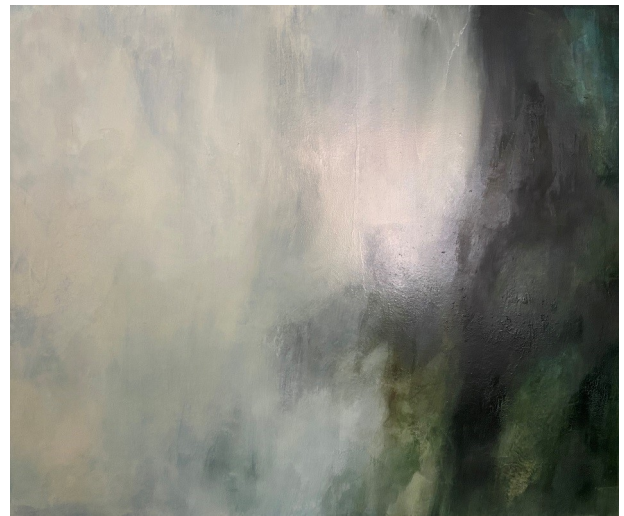


Brighton-based artist who creates expressive oil paintings that exist in the broad space between abstract and figurative. Lily's paintings are rendered with sensitivity and pure emotion. They are mysterious, confrontational and beautiful.

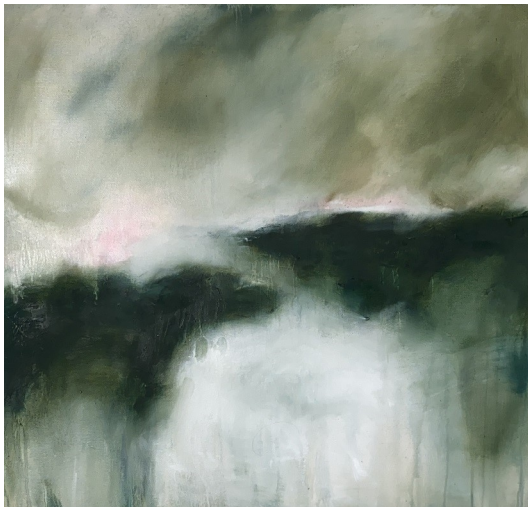
Lily is exhibiting at 35 North for the first time, and has exhibited her artwork in London, Brighton, Bristol, Chichester and Hungerford. Including group shows at YAP Art London, Cameron Contemporary Art Hove, Kevis House Gallery in Petworth, as well as collaborating with Award Winning European Architects Finkernagel Ross.



I came from the sky
Oil on canvas 120x100cm. £ 2400



A part of you flows out of me
Oil on canvas 120x100cm. £ 2400



Moorland mist
Oil on canvas 80x75cm. £ 1250



Begin
Oil on board 35x35cm. £ 600

EMILY JOLLEY



Emily is an accomplished painter and teacher of watercolour and acrylics, working in the mediums for over 20 years. Having studied Fine Art in Newcastle upon Tyne she migrated south to a sponsored studio in Artspace Portsmouth before relocating to Brighton, where she has her studio at Phoenix Art Space.

Emily has recently been working on a series of studies and paintings related to her interest in outdoor swimming.

“There is nothing more appealing to me than swimming in an open pool, it triggers happy childhood memories of shimmering reflections, ice creams, cold water, the smell of sun creme and the colour turquoise. These paintings attempt to capture the colour and ambiance of these moments.”



Saltdean Lido

Acrylic on canvas board 30x23cm. Framed £ 240



Deep end, Saltdean

Acrylic on canvas board 30x23cm. Framed £ 240



Sun rise dip, Sea Lanes

Acrylic on canvas board 30x23cm. Framed £ 240



Early morning, Sea Lanes

Acrylic on canvas board 30x23cm. Framed £ 240

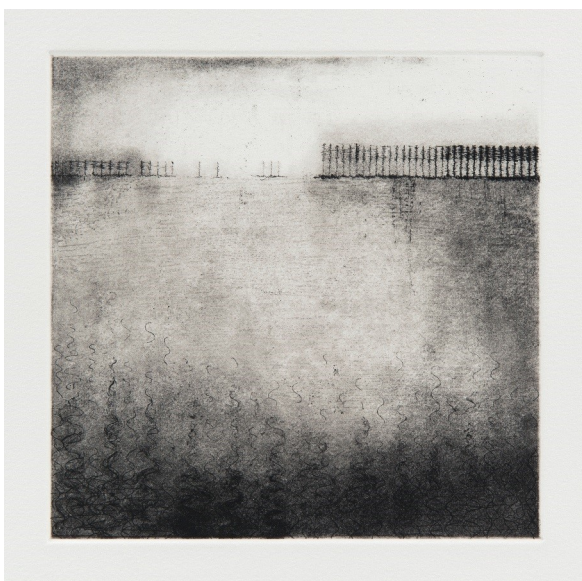
TANIA RUTLAND



In Tania's work there is a push and pull between representation and abstraction. Images emerge and recede, moving in and out of focus.

She is fascinated with the way in which generations of human activity have shaped the landscape leaving patterns of use and dis-use. Seasonal change, the constant flux of weather, movement of animals and people over several thousand years have shaped and formed these landscapes.

Working with drawings, paintings and etchings she is drawn to what is left behind through the consequence of human presence.



Flood plain

Etching, 20x20cm, framed size 40x40cm £ 190



Unseen in the darkness

Etching, 20x20cm, framed size 40x40cm £ 190



White path to Chanctonbury Ring

Etching, 25x25cm, framed size 40x40cm £ 210



Shallow folds

Etching, 25x25cm, framed size 40x40cm £ 210

JOHN WHITING



Co-owner and resident artist of 35 North Contemporary Fine Art, his studio adjoins the gallery space. John's work includes paintings and drawings in oil, pastel and pen & ink, often featuring local subjects: the streets and urban landscapes of Brighton; seascapes; people; movement; light; changing weather.

Through his work John aims to capture an experience or changing mood, to convey a sense of how it feels to be lashed by the storm or washed over by sunlight. John also works as an architect and his technical background is evident in his compositions which often feature strong lines of perspective and architectural subjects.



Early Spring in Ship Street
Oil on canvas 40x40cm, framed £ 700



Sunlight under the viaduct
Oil on canvas 40x40cm, framed £ 700



Low tide morning
Pen and coloured ink 19x19cm. Framed £ 250



Low tide evening
Pen and coloured ink 19x19cm. Framed £ 250