

Our **SPRING** exhibition features the work of six talented artists working in painting and etching mediums on paper, canvas and wood.



**CHARLIE DAY**

Brighton based abstract painter inspired by landscapes, still life and the uncanny.



**TORI DAY**

Brighton based figurative painter drawn towards the detail of overlooked objects.



**CLARE EMILY**

London based painter embracing the essence of vast natural landscapes.



**JOANNA FARROW**

East Sussex based painter inspired by the high forest landscape around her.



**KATIE WHITFORD**

Bristol based etching artist driven by a fascination with the gently ordinary.



**JOHN WHITING**

Brighton based artist and architect finding light and movement in our city.

**CHARLIE DAY**

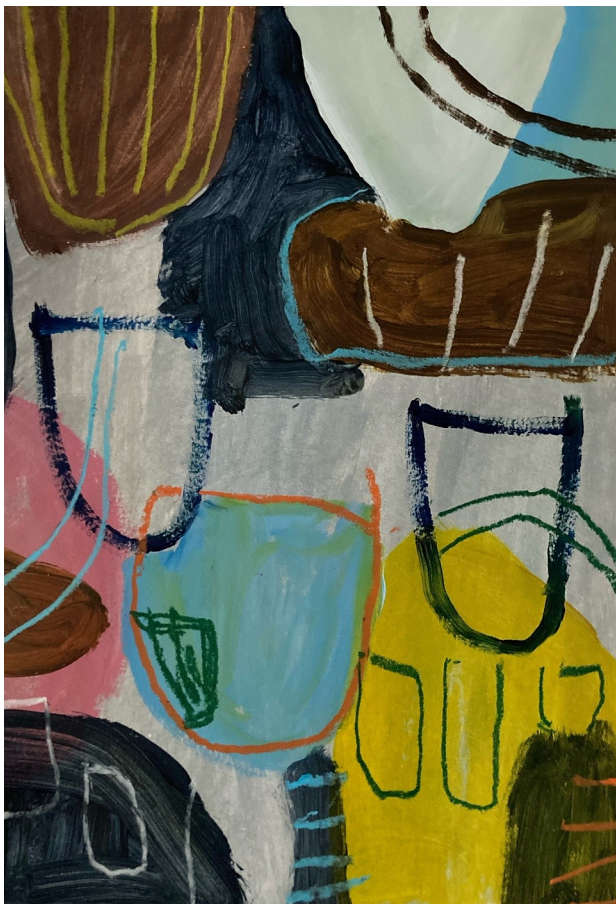


My theoretical interests incorporate the Uncanny, Foucault's ideas regarding Manet's 'Object of Painting', and the phenomenon of 'Bad Painting', Marcia Tucker's 1978 term for a certain type of painting that was 'kicking against the pricks' of 1960s and 1970s minimalism and conceptual art.

Influences stretch from Velázquez and Manet, through Philip Guston to the Saint Ives painters Roger Hilton and Patrick Heron. My practice ranges from landscape to still life, to purely abstract works. I am currently thinking about Heron's ideas regarding the 'marriage between the purely abstract entities on one side and the everyday world of commonplace ... realities, on the other'.

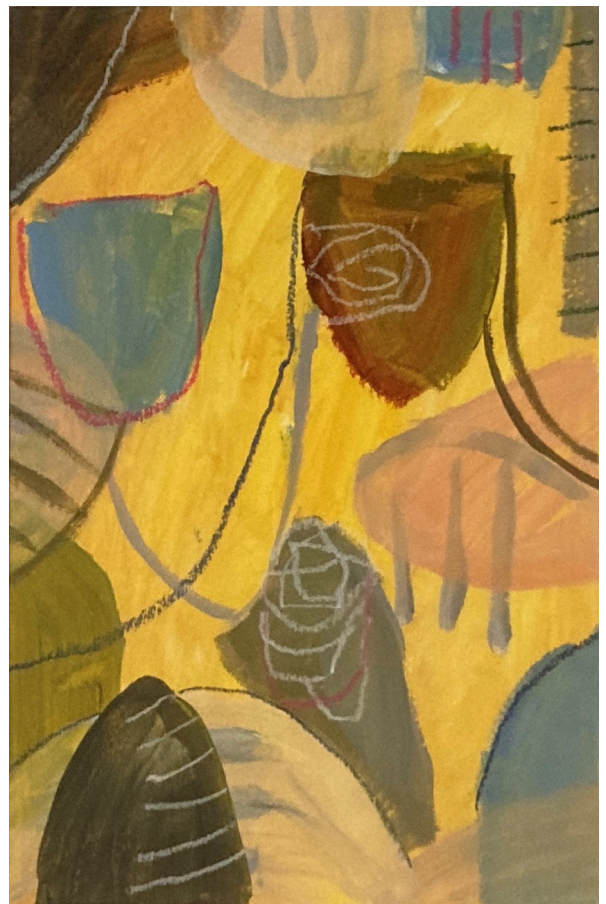
This body of work is based upon drawings of everyday objects and experiences, which I make in a small sketchbook I carry around with me. Then, back in the studio, they are painted and drawn with acrylic paint, wax crayons and oil pastels on paper.

Charlie exhibited at 35 North in 2018. His work appears in public and private collections throughout Europe, America and China.



**Serendipity**

Acrylic and oil pastel on paper 19 x 27cm.  
Framed £ 275



**A Song**

Acrylic and oil pastel on paper 19 x 27cm.  
Framed £ 275

**TORI DAY**



Figurative artist Tori Day paints portraits of 'overlooked' objects. Drawn to anything old, rusty, chipped or careworn, she gives new life to paraphernalia from previous generations. These humble, everyday bits and pieces have a past unknown to her, each

collected from a flea market, antique shop or car boot sale. Her works transcend time, inscribed with hidden histories and veiled memories.

Tori has a Foundation in Fine Art from Central Saint Martins and an MA in Fine Art from the University of Brighton. She draws inspiration from seventeenth and eighteenth-century still life painters such as Chardin, Cotán, Morandi and Zurbarán, and contemporary painters concerned with 'the overlooked'. Lighting is also of central importance in her compositions – the use of light elevates her objects, staging them with dramatic chiaroscuro and transforming forgotten bric-a-brac into precious artefacts full of secrets.

In this way, her paintings celebrate the many unseen hands through which these re-discovered gems have passed.

Tori's work has been selected for several highly respected contemporary exhibitions, including the Crash Open Salon at Charlie Dutton Gallery, London, the ArtWorks Open at Barbican Arts Group Trust, London, and multiple times for the Creekside Open at APT Gallery, London. She has also shown work at the Affordable Art Fair, London, courtesy of Nicholas Bowlby, Fine Art Dealer.

Tori exhibited at 35 North in 2018. Her work is in private collections throughout the UK, Europe, the US, Canada and South Africa.



**Allegory**

Oil on canvas 21 x 25cm.  
Framed £ 750



**Black Coffee**

Oil on canvas 15 x 10cm.  
Framed £ 625



**CLARE EMILY**



Working intuitively, Clare Emily seeks to embrace the essence of vast natural landscapes in her work, exploring the sense of depth and how light interacts with the sea. This is conveyed particularly by her impasto use of acrylic, applied with a palette knife to create layers and textural interest.

The interplay of colour and depiction of weather also play a major role in her style. The result is visually aesthetic, crisp and contemporary, semi-abstract art.

Clare's work is heavily influenced by the British coastline, particularly Chichester Harbour, where she is partly based. She is a self-taught painter, having originally trained as a cellist.

[www.clareemilyart.com](http://www.clareemilyart.com)



**Clay**

Acrylic on canvas 100 x 100cm  
Deep edge canvas £ 2500



**Cloudless**

Acrylic on canvas 100 x 100cm  
Deep edge canvas £ 2500



**Soft Horizon, West Wittering**

Acrylic on board 42 x 42cm  
Framed £ 595



**Amber Isle**

Acrylic on board 30 x 30cm  
Framed £ 395



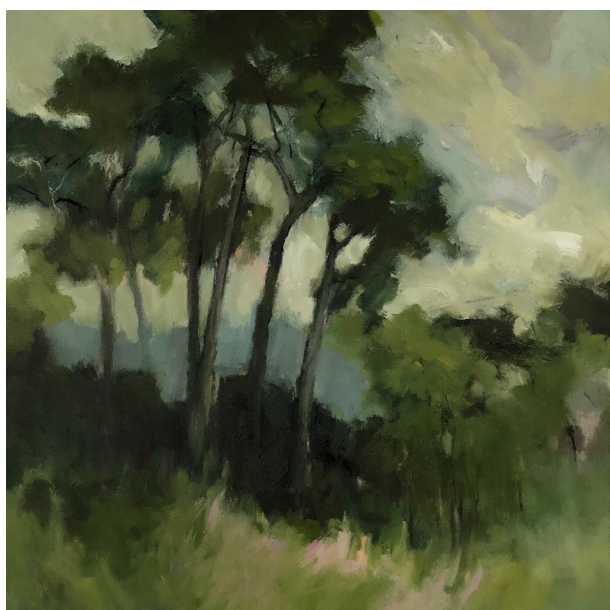
**JOANNA FARROW**



When I paint or draw I am fired with an enthusiasm – often excitement – that I rarely experience with any other occupation. My discovery of Art has been a life changing experience, from taking a Fine Art Diploma as a mature student, to being tutored by some extremely inspiring artists. Increasingly, the process and purpose of my paintings fills much of my thoughts as I survey a landscape, crashing wave or even an ingredient on a table. How might I interpret one of these subjects on canvas? I aspire to develop as an en plein air painter though I feel more comfortable with working from sketches, backed up by photographs, in my studio. I'm continually looking for new ways to increase my scope of

skills and techniques, and so develop as a painter. In 2017 I was shortlisted in the National Open Art Competition where one of my works 'Five Quinces' was selected for the NOA finalists Exhibition.

[www.art.joannafarrow.co.uk](http://www.art.joannafarrow.co.uk)



**Changing Light**

Oil on canvas 64 x 64cm. Framed £ 800



**Mizzle**

Oil on canvas 64 x 64cm. Framed £ 800



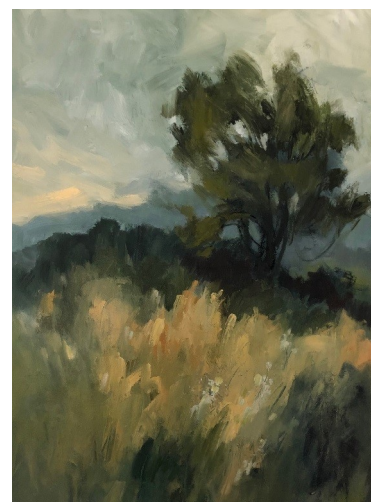
**High Forest I**

Oil on canvas 49 x 64cm  
Framed £ 650



**Forest Birches**

Oil on canvas 79 x 79cm  
Framed £ 1100



**High Forest II**

Oil on canvas 49 x 64cm  
Framed £ 650



**KATIE WHITFORD**

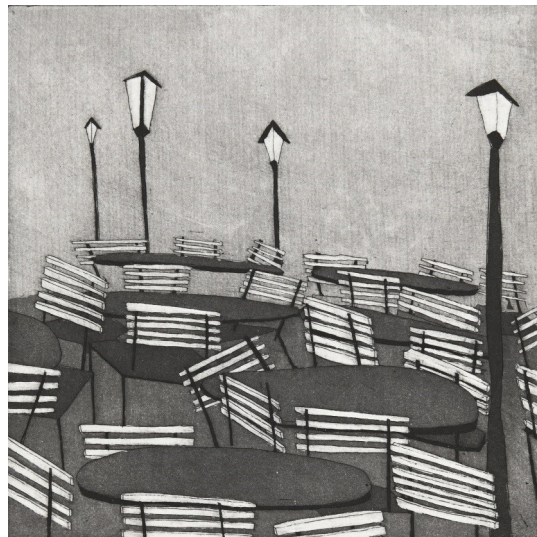


Katie Whitford is Bristol based artist whose work explores the everyday intimacies of home. Katie's etchings and drawings are tightly packed with motifs and references. Her work is constructed from her own memories and experiences, woven with a range of visuals from films, museums, books and places. She carefully considers the spaces between objects and composes drawings and etchings rich in surface pattern and tone. She is driven by a fascination with the gentle ordinariness of home and the way in which objects characterise a place, while narrating and describing a life.

Katie studied for her BA in Fine Art at Goldsmiths before accepting an 18-month scholarship at the Royal Drawing School, London. She has a masters in multi-disciplinary printmaking from the University of West England, Bristol. She has undertaken residencies and has work in private collections in Italy, France, UK, Ireland and America. She also has work in the Royal Collection and has exhibited at Banksie and Christies. In 2019, she was selected for the Paragon Press printing prize. Katie first exhibited at 35 North in 2022.



**Unfolding right in front of me**  
Etching, with aquatint, 23.5 x 23.5 cm.  
Framed 30.5 x 30.5 cm, £ 190



**Now I can feel the sun in my eyes**  
Etching, with aquatint, 23.5 x 23.5 cm.  
Framed 30.5 x 30.5 cm, £ 190



**Wine changes back to water too**  
Etching, with aquatint, 18 x 18 cm.  
Framed 26 x 26 cm, £ 180



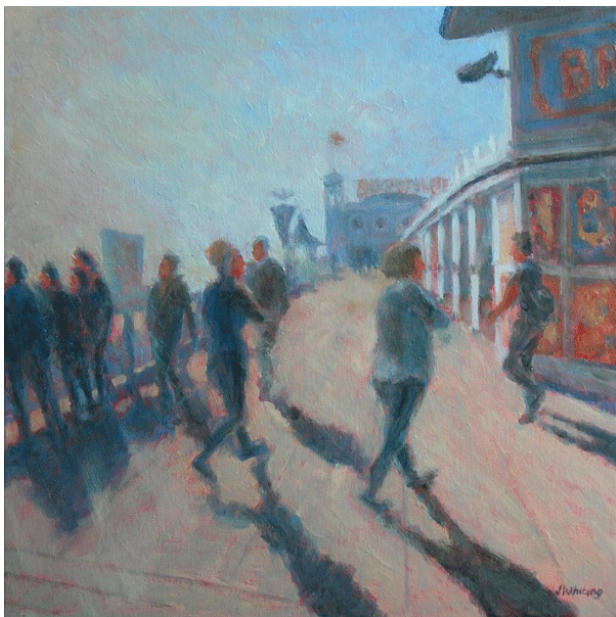
**Drawing with words**  
Etching, with aquatint, 6 x 6 cm.  
Framed 22 x 22 cm, £ 130

**JOHN WHITING**



John spent his childhood in Bexhill-on-Sea before studying architecture in London. His interest in painting and drawing buildings evolved over time to include landscapes and life studies. Art and architecture have always been closely linked and in John's work each discipline informs the other in a striking balance of rigour and expression. His technical background is evident in his compositions which feature strong lines of perspective and architectural subjects as a back drop in his paintings. Paintings which are more about capturing a sense of the experience, with extremes of weather, strong light and movement as recurring themes in his work.

He has travelled extensively in Europe, USA and Asia and spent several years living in Hong Kong and Australia. In 1994-5 he exhibited his work in Hong Kong's Wattis Fine Art Gallery and at the Hong Kong Fringe Club. The Fink Gallery in Sydney staged his first one-man show in 1998. From 1999-2012 John exhibited his work in his own Open House as part of the Brighton Festival. In 2010 John exhibited at the Chateau de Bosmelet in Normandy and at La Linerie Arts Centre near Dieppe in 2013 & 2016. Since setting up his studio adjoining the gallery in 2014, 35 North has exhibited his work regularly and his studio at the rear of the gallery is often open for viewings. His work is held in private collections locally and around the world. You can follow John's work on instagram [@jwartbrington](https://www.instagram.com/jwartbrington)



**Morning on the pier**

Oil on canvas 40 x 40cm. Framed £ 700



**February storm**

Charcoal and pastel 28x20cm. Framed £ 350



**Storm front**

Charcoal and pastel 28x20cm. Framed £ 350