

**Katie Whitford**

Katie Whitford b. 1995 is an artist based in London. Her work explores the everyday intimacies of home.

Katie's etchings and drawings are tightly packed with motifs and references. Her work is constructed from her own memories and experiences, woven with a range of visuals from films, museums, books and places. She carefully considers the spaces between objects and composes drawings and etchings rich in surface pattern and tone. She is driven by a fascination with the gentle ordinariness of home and the way in which objects characterise a place, while narrating and describing a life.

Katie studied for her BA in Fine Art at Goldsmiths before accepting an 18-month scholarship at the Royal Drawing School, London. She has a masters in multi-disciplinary printmaking from the University of West England, Bristol. She has undertaken residencies and has work in private collections in Italy, France, UK, Ireland and America. She also has work in the Royal Collection and has exhibited at Bankside and Christies. In 2019, she was selected for the Paragon Press printing prize.

**Soft Lighting, an exhibition of etchings by Katie Whitford
6th to 27th August 2022**

Soft Lighting is a collection of recent works by London based printmaker, Katie Whitford. From bathrooms to kitchen tables, this body of work observes the quiet intimacies of home and place.

This series of etchings with aquatint details real, fictional and imagined scenes that examine the private spaces we inhabit, the objects we live amongst, in the rooms where much of life happens.

Katie enriches the surface of her work with the process of aquatint, creating a range of tones to work with the delicate etched lines to depict softly lit moments.



Glasgow flat

Etching, with aquatint, 25.5 x 30 cm.

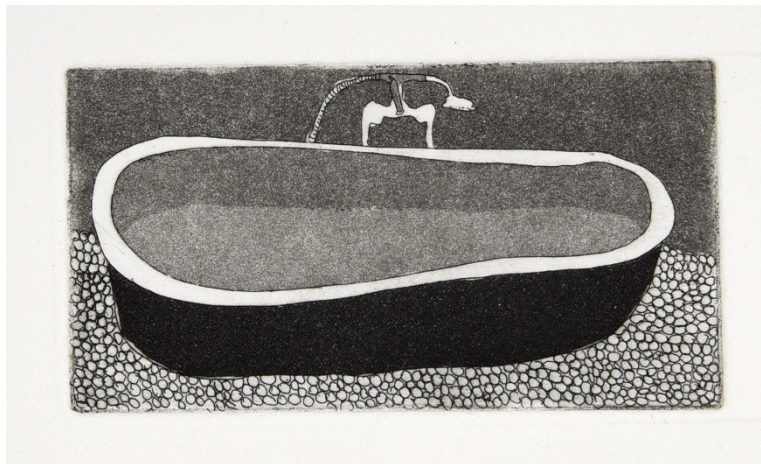
Unframed, £ 190. Framed 32.5 x 38 cm, £ 220



Questioning your weakest spot

Etching, with aquatint, 22 x 25.5 cm.

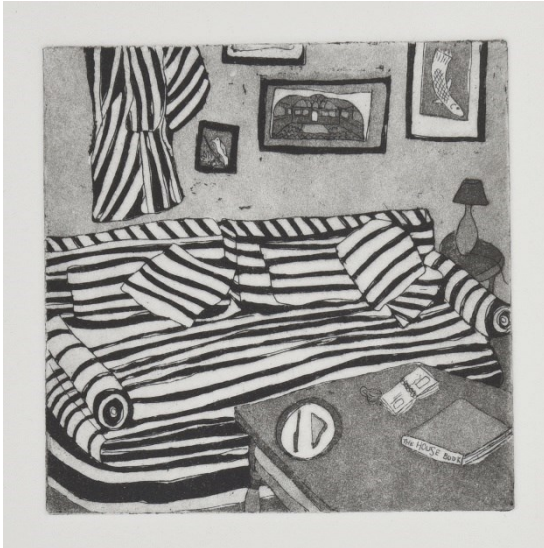
Unframed, £ 180. Framed 30 x 33 cm, £ 210



Living life with your clothes on

Etching, with aquatint, 16 x 12 cm.

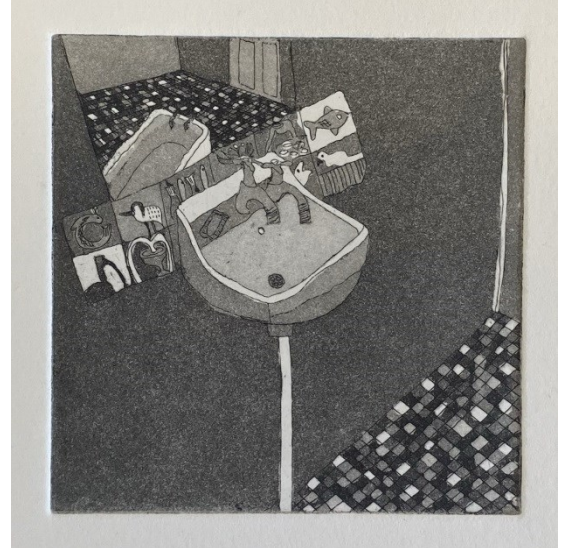
Unframed, £ 130. Framed 23.5 x 19.5 cm, £ 150



Toast and notes

Etching, with aquatint, 18 x 18 cm.

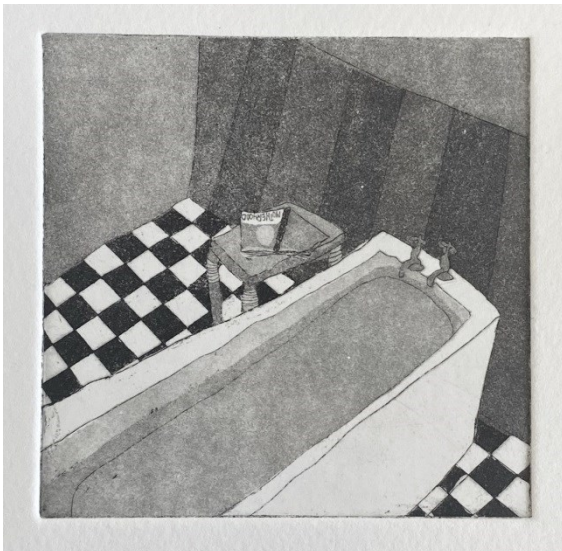
Unframed, £ 160. Framed 26 x 26 cm, £ 180



Built happy

Etching, with aquatint, 18 x 18 cm.

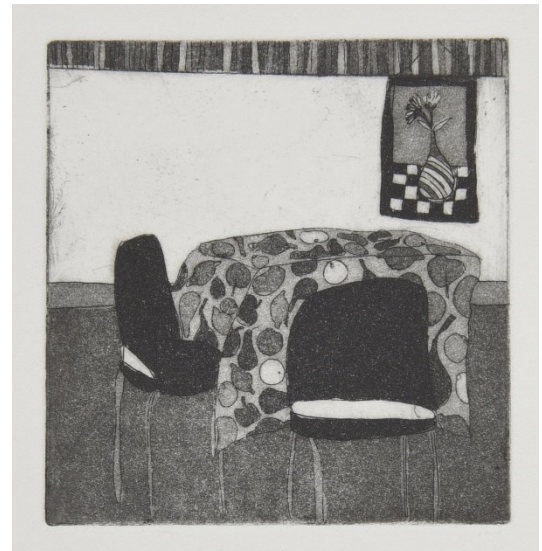
Unframed, £ 160. Framed 26 x 26 cm, £ 180



Wine changes back to water too

Etching, with aquatint, 18 x 18 cm.

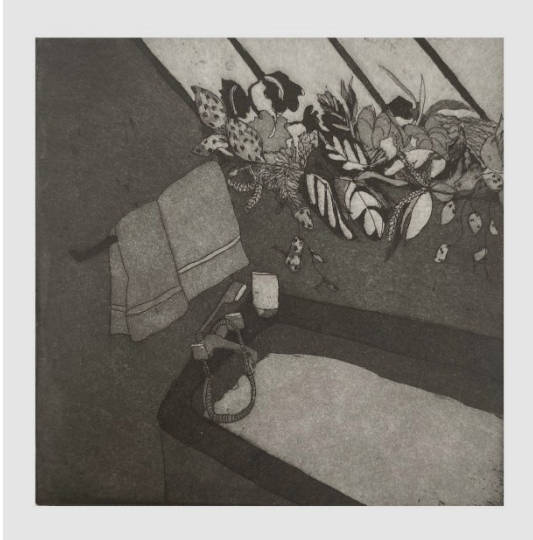
Unframed, £ 160. Framed 26 x 26 cm, £ 180



Three single girls in an empty house

Etching, with aquatint, 18 x 18 cm.

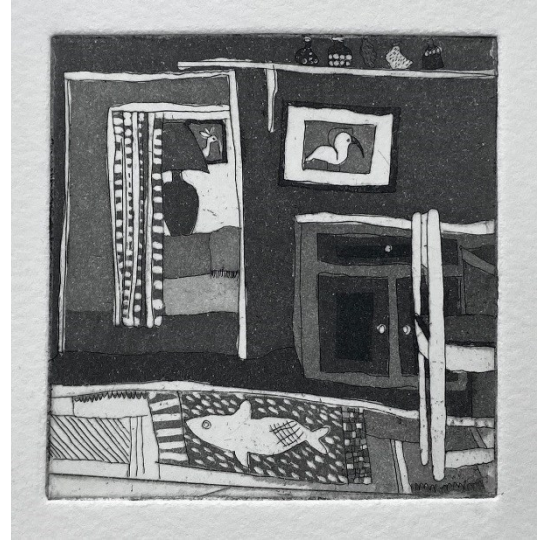
Unframed, £ 160. Framed 26 x 26 cm, £ 180



There's a whole world in there

Etching, with aquatint, 18 x 18 cm.

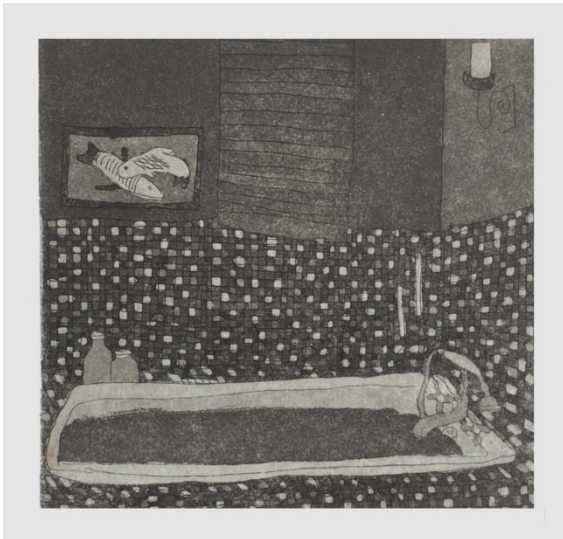
Unframed, £ 160. Framed 26 x 26 cm, £ 180



Time to convince your mirror

Etching, with aquatint, 18 x 18 cm.

Unframed, £ 160. Framed 26 x 26 cm, £ 180



I'm sitting right here

Etching, with aquatint, 18 x 18 cm.

Unframed, £ 160. Framed 26 x 26 cm, £ 180



A previous fig from a future tree

Etching, with aquatint, 18 x 18 cm.

Unframed, £ 160. Framed 26 x 26 cm, £ 180



Contained

Etching, with aquatint, 18 x 18 cm.

Unframed, £ 160. Framed 26 x 26 cm, £ 180



The moon is low tonight

Etching, with aquatint, 18 x 18 cm.

Unframed, £ 160. Framed 26 x 26 cm, £ 180



Is a woman not an end in herself?

Etching, with aquatint, 18 x 18 cm.

Unframed, £ 160. Framed 26 x 26 cm, £ 180



It's best not to encourage men to waste your time

Etching, with aquatint, 18 x 18 cm.

Unframed, £ 160. Framed 26 x 26 cm, £ 180