

'Towards Winter' brings together a collection of paintings and drawings in oils, pastels and inks by Brighton artist John Whiting, all relating to a seasonal theme of autumn and winter.

Mellow mists, lowering light and autumn storms. Walks through winter trees, the possibility of snow, skating at the Royal Pavilion and warm cosy pub interiors.



Snow on Kings Cliff

Oil on canvas 60x60cm. Framed £ 950



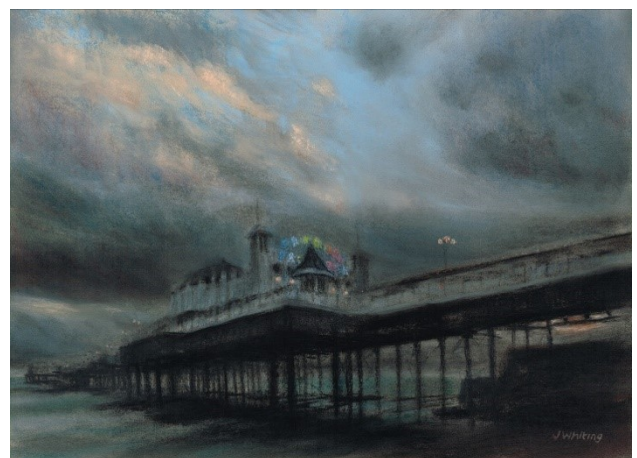
Skaters at the Royal Pavilion

Oil on canvas 60x60cm. Framed £ 950



Misty pier

Oil on canvas 80x60cm. Framed £ 1200



Palace Pier at dusk

Pastel 57x41cm. Framed £ 550



Stormy pier

Oil on canvas 80x60cm. Framed £ 1200



New York Christmas

Oil on canvas 60x60cm. Framed £ 950



In The Dorset

Oil on canvas 40x40cm. Framed £ 600



Corner cafe

Oil on canvas 40x40cm. Framed £ 600



The Paris House

Oil on canvas 80x60cm. Framed £ 1200



The bar at La Palette

Oil on canvas 100x50cm. Framed £ 1350



Woodland path

Oil on canvas 50x50cm. Deep edge canvas £ 650



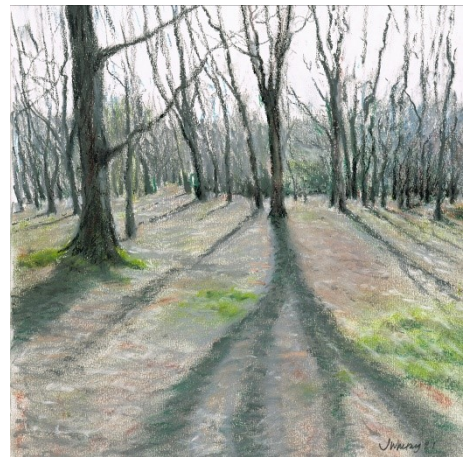
Upper Lodges Wood

Pastel 29x29cm. Framed £ 350



East Street

Pen and coloured ink 19x19cm. Framed £ 250



Highpark Wood

Pastel 29x29cm. Framed £ 350



New Road

Pen and coloured ink 19x19cm. Unframed £ 190



Standean Bottom

Pastel 29x29cm. Framed £ 350



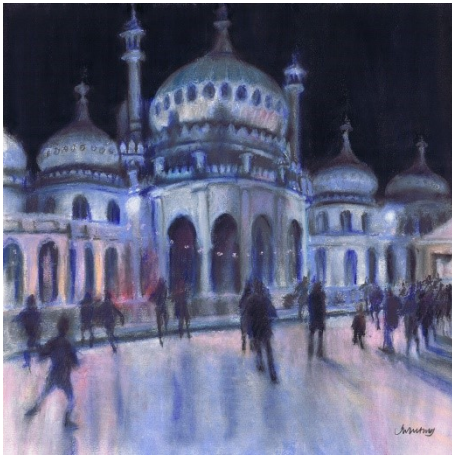
Sunset study

Pastel on paper 28x20cm. Unframed £ 290



Trees and shadows I

Pen and ink 19x19cm. Unframed £ 150



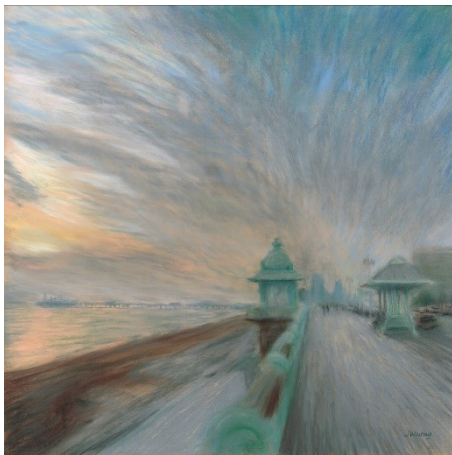
Ice Pavilion

Limited edition print. Framed £ 140



Trees and shadows II

Pen and ink 19x19cm. Unframed £ 150



Late light on Kings Cliff

Limited edition print. Framed £ 140



Trees and shadows III

Pen and ink 19x19cm. Unframed £ 150