

'Unlocked' brings together a collection of paintings and drawings in oils, pastels and inks by Brighton artist John Whiting, all completed during lockdown. They represent his response to the changing nature of our city and our way of life, brought about by the extraordinary events of the past 15 months:

"The North Laine is known for it's bustling street life and dynamic independent businesses, under lockdown this became a desolate place by comparison. At first I was despairing of the empty streets and closed pubs, gradually this changed to intrigue as I realised this presented a unique opportunity to observe and record a place previously so familiar but suddenly changed."

"We've never done so much walking, and I have discovered parts of our city and the surrounding countryside previously unknown to me. Lockdown has created time and space to wander and appreciate natural beauty with a heightened sense of awareness of form, colour and light."



East Street

Pen and coloured ink 19x19cm. Framed £ 250



Preston Park

Pen and ink 19x19cm. SOLD



New Road

Pen and coloured ink 19x19cm. Framed £ 250



Kensington Gardens in May

Pen and ink 19x19cm. Unframed £ 150



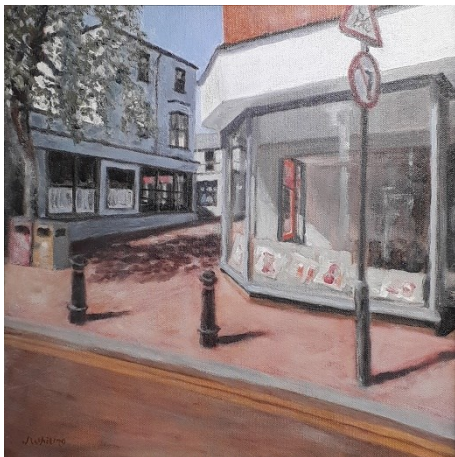
Misty pier

Oil on canvas 80x60cm. Framed £ 1200



Palace Pier at dusk

Pastel 57x41cm. Framed £ 550



Shop to let

Oil on canvas 40x40cm. SOLD



Corner cafe

Oil on canvas 40x40cm. Framed £ 600



To the sea

Oil on canvas 40x40cm. SOLD



Hove promenade

Pastel 29x29cm. SOLD



Devils Dyke

Oil on canvas 55x41cm. Framed £ 600



Above Poynings

Oil on canvas 55x41cm. Framed £ 600



Woodland path

Oil on canvas 50x50cm. Deep edge canvas £ 650



Curving path

Oil on canvas 50x50cm. Deep edge canvas SOLD



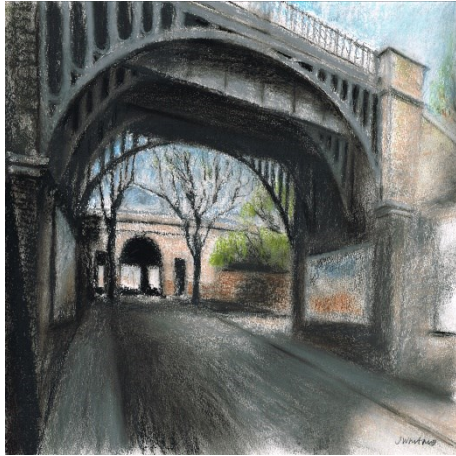
Kensington greys

Charcoal 29x29cm. Framed £ 350



Bond Street

Charcoal 29x29cm. Framed £ 350



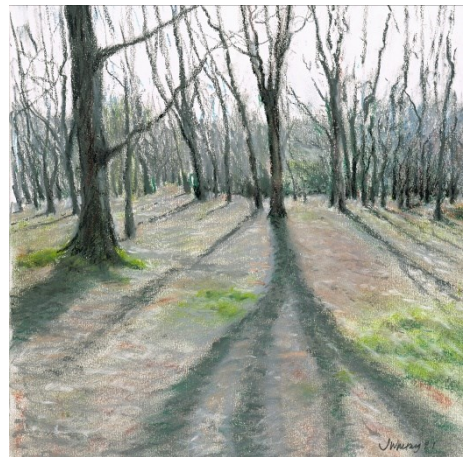
Arches
Pastel 40x40cm. SOLD



Upper Lodges Wood
Pastel 29x29cm. Framed £ 350



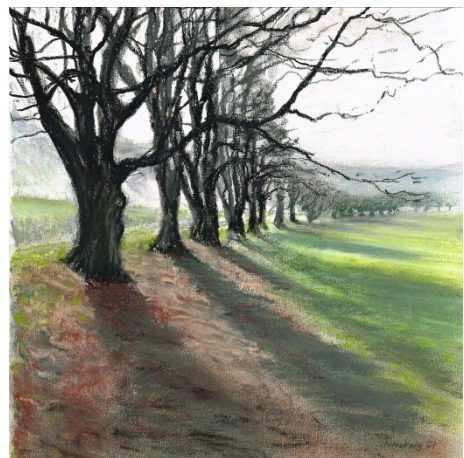
Viaduct morning light
Pastel 40x40cm. SOLD



Highpark Wood
Pastel 29x29cm. Framed £ 350



Lockdown rush hour
Pastel 40x40cm. SOLD



Standean Bottom
Pastel 29x29cm. Framed £ 350



Bandstand

Pen and coloured ink 19x19cm. Framed £ 250



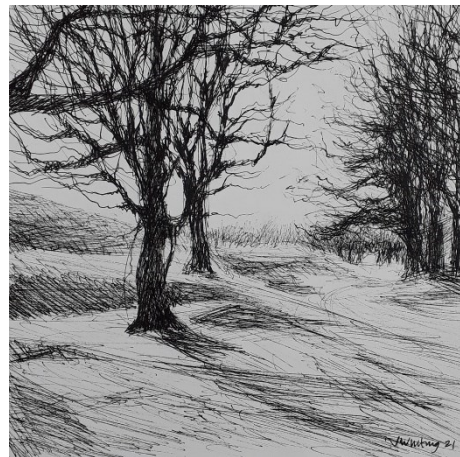
Trees and shadows I

Pen and ink 19x19cm. Unframed £ 150



Ship Street

Pen and coloured ink 19x19cm. SOLD



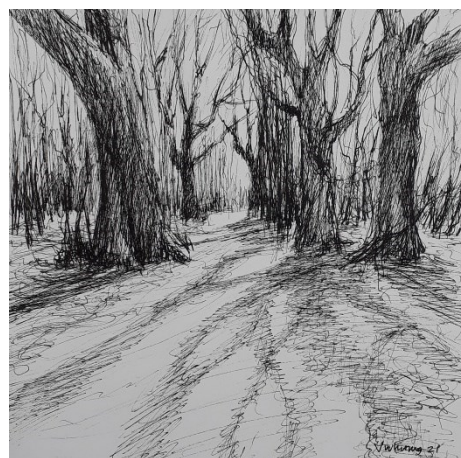
Trees and shadows II

Pen and ink 19x19cm. Unframed £ 150



Coffee queue

Pastel 29x29cm. Framed £ 350



Trees and shadows III

Pen and ink 19x19cm. Unframed £ 150



Upper Gardner Street
Pen and ink 19x19cm. Unframed £ 150



North Road
Pen and ink 19x19cm. Unframed £ 150



Sydney Street
Pen and ink 19x14.5cm. Unframed £ 150



Kensington Gardens study I
Pen and ink 19x14.5cm. Unframed £ 150



Kensington Gardens study II
Pen and ink 19x19cm. Unframed £ 150



Gardner Street
Pen and ink 19x19cm. Unframed £ 150