

This August we are delighted to present the work of artist Emma Hill. Emma is a figurative painter living and working in London, painting portraits, still life and landscape. **Finding the Light** is Emma's first solo exhibition outside London and features a series of still life flower paintings peppered with a small number of plein air paintings made both in her compact London garden and the gardens at Chiswick House in west London.

Speaking about the exhibition Emma says: "Why have I called this exhibition **Finding the Light**? As an artist, I think you are always searching for the light, waiting for it, watching what it does to the thing or place or person it falls upon. Waiting for it to illuminate, brightly or softly".

Emma originally trained as an artist, both in the UK and in France, but was seduced and energised by the written word, magazines and the beauty industry. Emma became an award-winning beauty and fragrance journalist writing about the subject for many years.

Yet even when in the field making notes about the lavender and iris harvest in Provence Emma was building up sketch books of drawings. This led to a series of pen and ink paintings, which she sold through interiors store Atelier Living and later to the first solo exhibition of her work in 2004. Over the past 15 years Emma has continued to dovetail her work as an acclaimed journalist with her artistic practice working as a portrait and still life painter, developing her skills at art schools in London including Heatherley School of Fine Art.

Emma has exhibited with the Chelsea Art Society as well as independently. Paintings by Emma Hill have been pre-selected for both the Royal Society of Portrait Painters and the New English Art Club. Emma Hill's work has been featured in the FT How to Spend It for whom, alongside British newspapers, magazines and Vogue Japan, she has written regularly. Emma's paintings also feature in private collections.

FINDING THE LIGHT runs from 7—28 August at 35 North Gallery, 35 North Road, Brighton BN1 1YB. Gallery hours 11 - 5.30pm Thurs/Fri/Sat or by appointment. For enquiries please contact Sharon Whiting.



Jasmine Light in Blue, 2021

Oil on board 40x30cm. Frame with white gold leaf **SOLD**



Finding The Light
(view along an avenue at Chiswick House), 2021
Oil on canvas 30x24cm. Frame with white gold leaf **SOLD**



A London Garden Has Magic Too, 2020
Oil on board 30x40cm.
Frame with white gold leaf £795



Pink Camelia with Antique Scent Bottle, 2021
Oil on board 24x30 cm
Frame with white gold leaf **SOLD**



Tumbling Pansies, 2021
Oil on board 40x30cm.
Frame with white gold leaf £795



Bayntun Tulips, 2021
Oil on board 30x24cm.
Hand finished frame **SOLD**



Diptyque Jasmin 2, 2020
Oil on board 24x30cm.
Frame with gold leaf **SOLD**



Anemone and Miniature Tulip, 2021
Oil on board 24x30cm.
Frame with white gold leaf **SOLD**



Seat and Silence, 2020
Oil on board 30x40cm.
Hand finished frame **SOLD**



Pink Camelia Resting Against a Glass, 2020
Oil on board 20x25cm.
Frame with white gold leaf **SOLD**



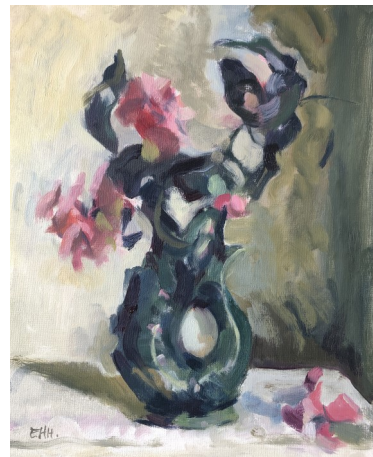
Ceramic Vase with Clementine and a Sprig of Hydrangea, 2020
Oil on board 30x24cm. Frame with gold leaf **SOLD**



Two French Garlic, 2019
Oil on board 30x24cm.
Frame with white gold leaf £675



Daffodils in a Moroccan Vase, 2021
Oil on board 24x30cm.
Frame with white gold leaf £675



Gluggle Jug and Pink Camelia, 2020
Oil on board 24x30cm.
Frame with white gold leaf **SOLD**



Tulip Heads in Spring, 2021
Oil on board 18x24cm.
Hand finished frame £450



Three Roses, Tulips Overblown, 2021
Oil on board 30x40cm.
Frame with white gold leaf £795



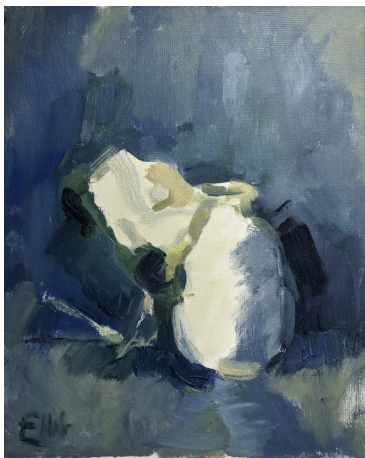
White Foxglove and Hydrangea After The Rain, 2021
Oil on board 40x30cm.
Frame with white gold leaf **SOLD**



Still Life with Irish Jug, Scottish Vase and Lemon, 2019
Oil on canvas 30x40cm.
Frame with white gold leaf **SOLD**



Bayntun Tulips in an Asparagus Vase, 2021
Oil on board 30x40cm.
Hand finished frame £725



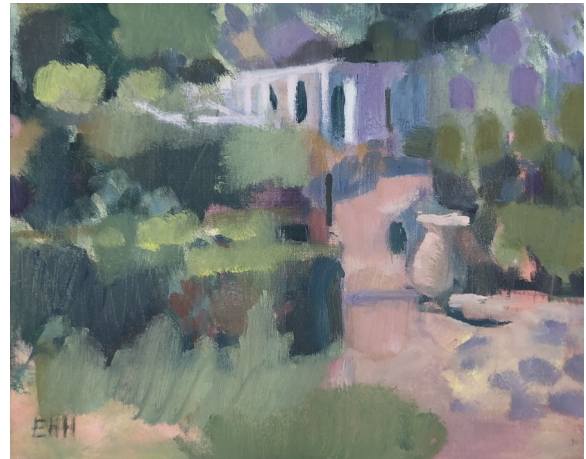
White Light White Camelia And Vase 2
Oil on board 24x30cm.
Hand finished frame £595



Red Camelia For Love, 2021
Oil on board 18x24cm.
Frame with white gold leaf **SOLD**



**Where The Light Shimmers Through The Trees
(Chiswick House Gardens), 2021**
Oil on board 30x24cm. Hand finished frame £595



Pink Urn (Chiswick House Gardens), 2021
Oil on canvas 30x24cm.
Frame with white gold leaf £675



Coffee Cup with a Sprig of Hydrangea, 2019
Oil on canvas 24x30cm.
Hand finished frame £595



French Enamel Jug, 2019
Oil on board 24x30cm.
Hand finished frame £595



White Foxglove After The Rain, 2021
Oil on board 24x30cm.
Frame with gold leaf £675